

UMZUMBE MUNICIPALITY
UMASIPALA WASEMZUMBE



Umzumbe
MUNICIPALITY

TENDER OPENNING FOR THE
CONSTRUCTION OF UCC ACCESS ROAD
DATE :21 FEBRUARY 2014

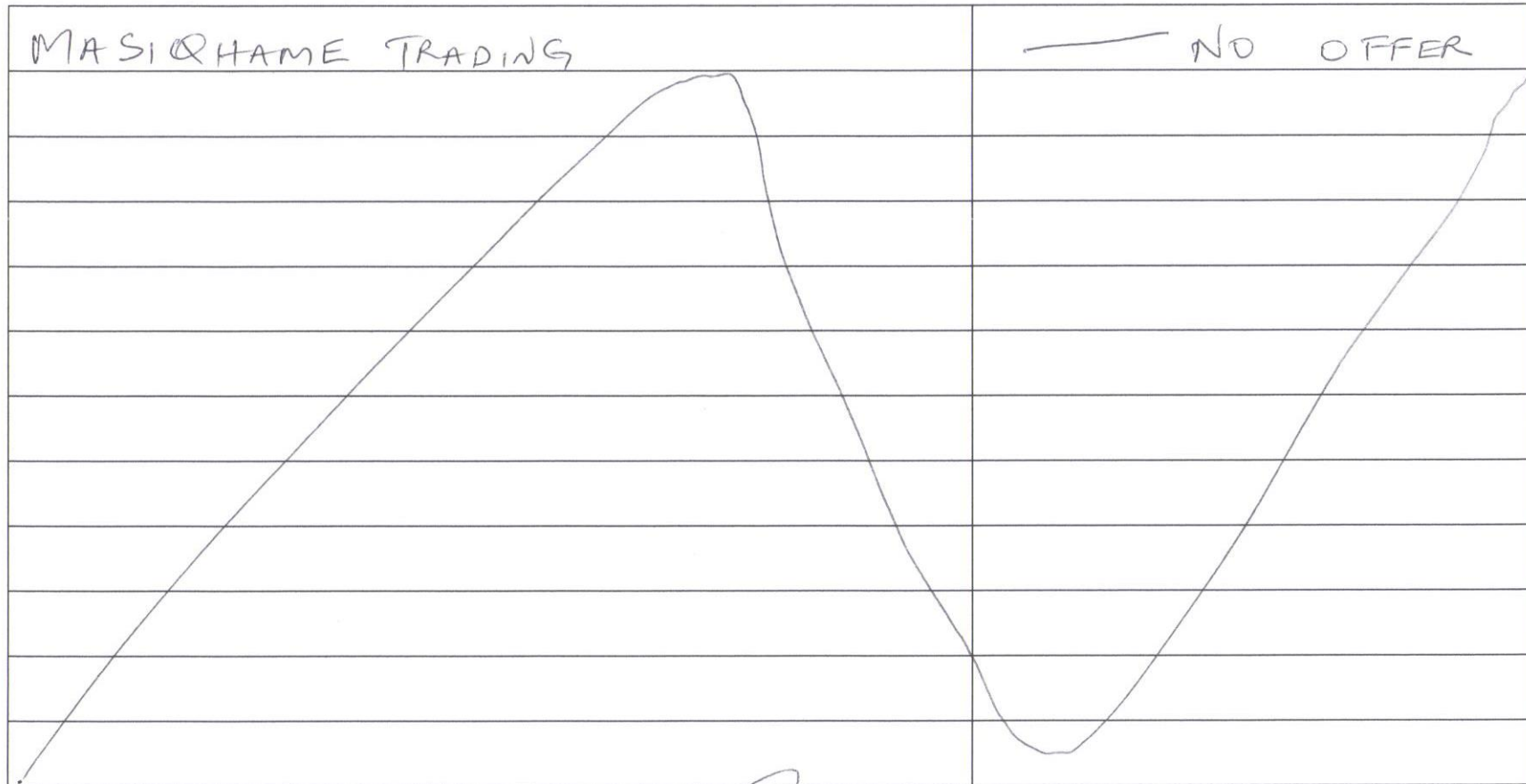



Umzumbe
MUNICIPALITY


COMPANY NAME	AMOUNT TENDERED
MADEVU CONTRACTORS CC	R 4 454 201,73
IGOGHA CONSTRUCTION	R 2 719 725,36
PHAMBILI CONTRACTORS	R 4 519 077,42
SAKON TRADI	R 5 998 590,51
KHULU CIVILS JV ZUMBE	R 3 759 880,74
TAMBA PROJECTS	R 3 816 511,38
EGXENI ENGINEERING	R 7 473 759,74
LETHOKHLE INVESTMENT	R 3 771 304,68


MOKOENA CONSTRUCTION	R 6 881 613,42
MICROZONE TRADING 890 CC	R 3 976 628,38
EKENE INVESTMENTS CC.	R 9 377 300,39
SIVA PILLAY CONSTRUCTION CC.	R 7 401 214,59
SGM JV ANESA 101 CC	R 3 866 176,05
TSW CONSTRUCTION	R 7 367 155,90
SILETHOKU HLE CONSULTING AND PROJECTS	R 3 636 757,75
WONKE AMAKHOSIKAZI CONSTRUCTION	R 5 234 321,40
LUYEZA TRADING	R 6 549 554,22
MABONA CIVILS & PLANT HIRE	R 5 570 738,20
MDIMA CIVILS	R 6 832 312,41
K G Z SERVICES	R 7 473 759,74

DYROSA INVESTMENTA SONNY BUCHAYA	R 5 631 463,20
BO & TAA TRANSPORT JV UMCHILOBOMUY CIVILS	R 3 911 226,00
I NEELO QHAMA JV	R 4 632 214,00
KHAZI TRADING ENTERPRIZE CC	R 3 241 800,62
MAHAMBAYEDWA CIVILS	R 3 071 503,71
CAMLULO TRADING CC TA EYETHU PROJECTS PLANTHIRE	R 4 113 358,26
SELE SELE & MUSA TRADING & TOURS	R 2 990 940,40
VALLEY RIVER TRADING 218	R 2 974 377,42
INGQONDO CONSTRUCTION	R 6 756 213,42
MAISO CONTRACTOR CONTRACTOR CC	R 2 961 321,00
BHENE ZIZI CONTRACTORS	R 3 759 629,94
DIMZO'S CONSTRUCTION & PROJECTS	R 5 894 797,27



TECHNICAL REPRESENTATIVE : _____ 

SUPPLY CHAIN REPRESENTATIVE: _____ 

CORPORATE REPRESENTATIVE : _____ 

UMZUMBE MUNICIPALITY

21 FEB 2014

Sipofu Road

P.O. Box 561

4220